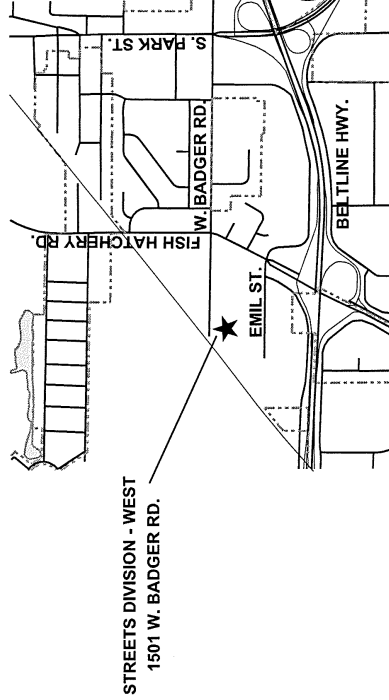


MADISON, WISCONSIN

CITY OF MADISON ENGINEERING DIVISION DEPARTMENT OF PUBLIC WORKS PLAN OF PROPOSED IMPROVEMENT

WEST BADGER ROAD SALT BARN

PROJECT NO. 44001
CONTRACT NO. 8654



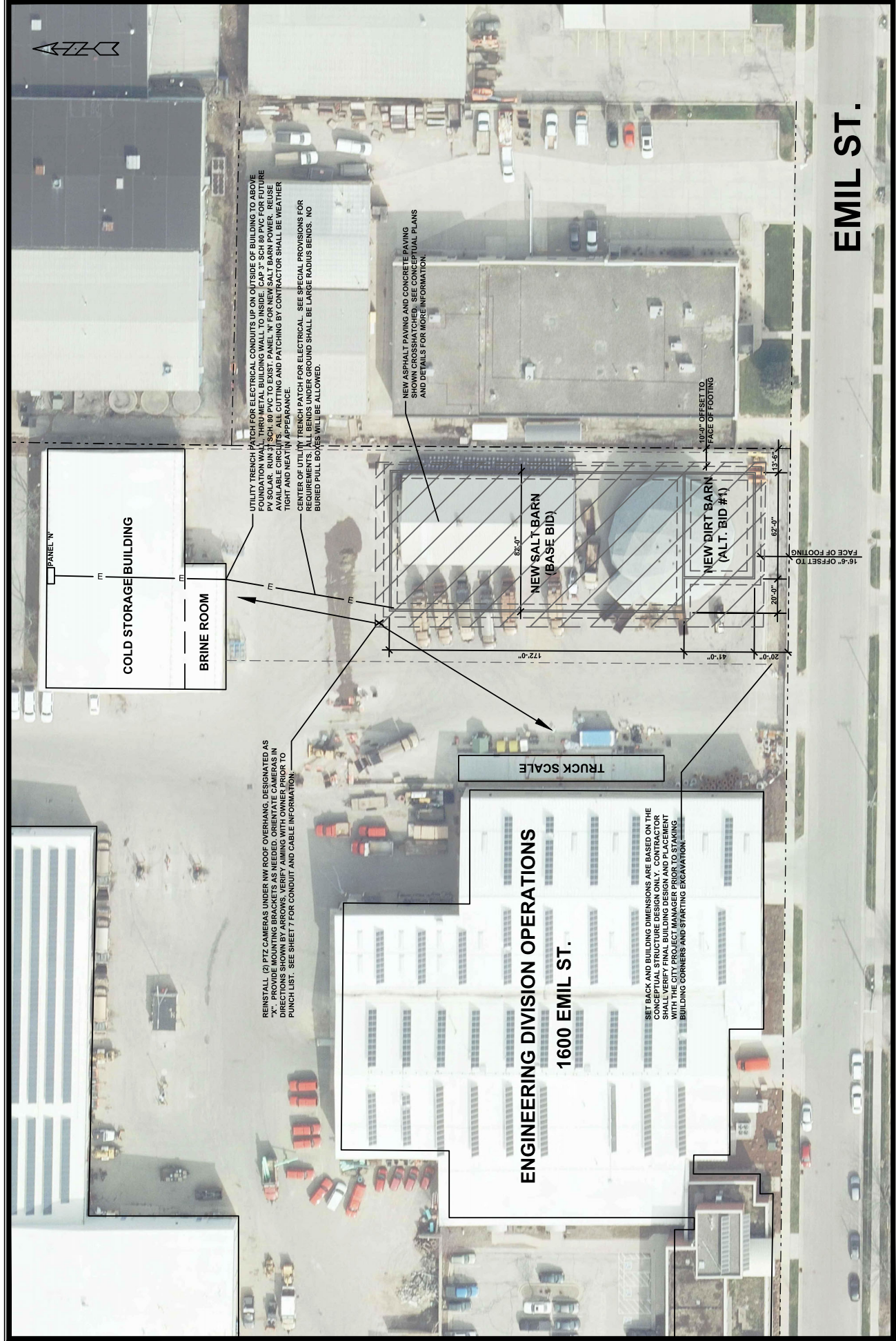
STREETS DIVISION - WEST
1501 W. BADGER RD.

SHEET INDEX

- TITLE SHEET
- GS-1 GENERAL LOCATION PLAN
- 1 PROJECT LIMITS, EROSION CONTROL AND DEMOLITION PLAN
- 2 NEW BUILDING LOCATION AND SITE WORK PLAN
- 3 CONCEPTUAL PLAN AND PERSPECTIVES
- 4 CONCEPTUAL EXT. ELEVATIONS, PAVING / DRAINAGE PLANS
- 5 SITE CONSTRUCTION DETAILS
- 6 CONCEPTUAL INTERIOR ELEVATIONS AND PAINT MARKING
- 7 ELECTRICAL AND LIGHTING PLANS
- EL-100 EXTERIOR LIGHTING PHOTOMETRICS AND SCHEDULE

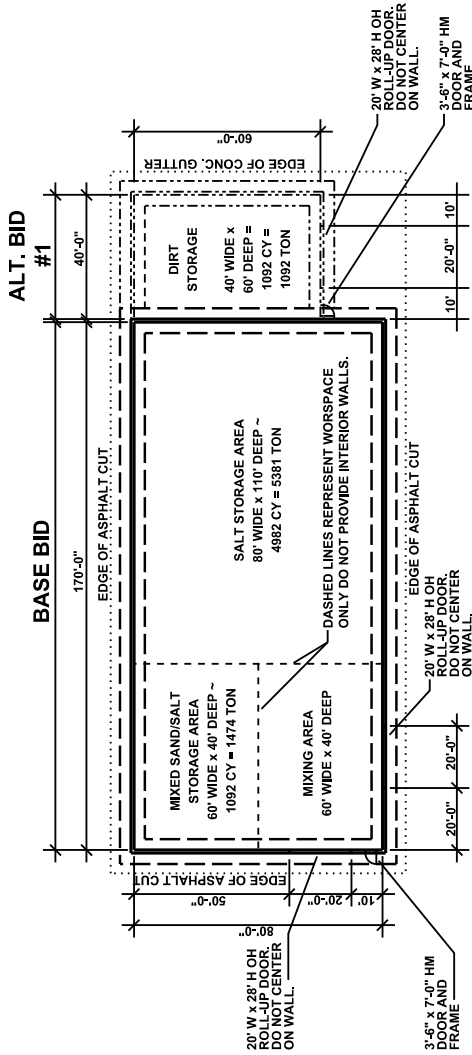
PUBLIC WORKS IMPROVEMENT PROJECT
 APPROVED BY THE COMMON COUNCIL OF MADISON WISCONSIN
 RESOLUTION: RES-22-00197
 FILE ID: 69912
 DATE: MARCH 29, 2022

PUBLIC WORKS IMPROVEMENT DESIGN
 APPROVED BY *Ch. Greg Fick*
 CITY ENGINEER
 Jul 26, 2022
 DATE

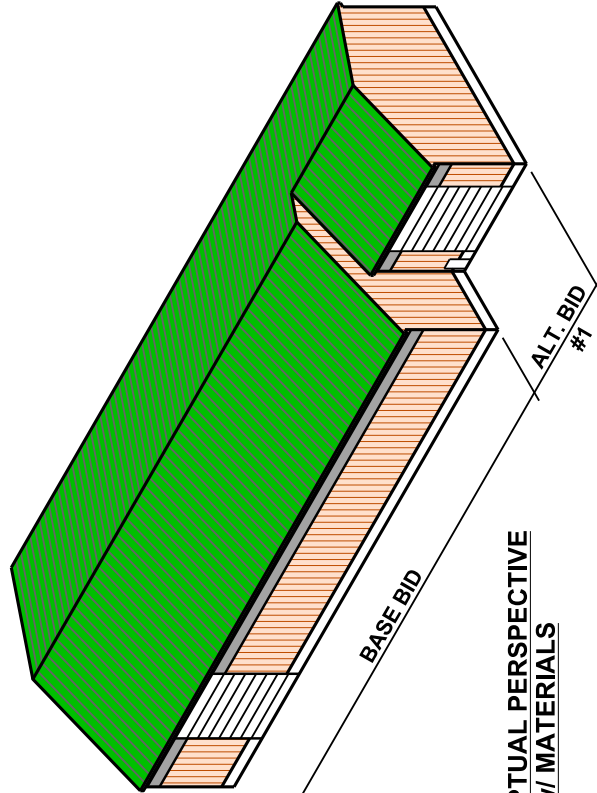
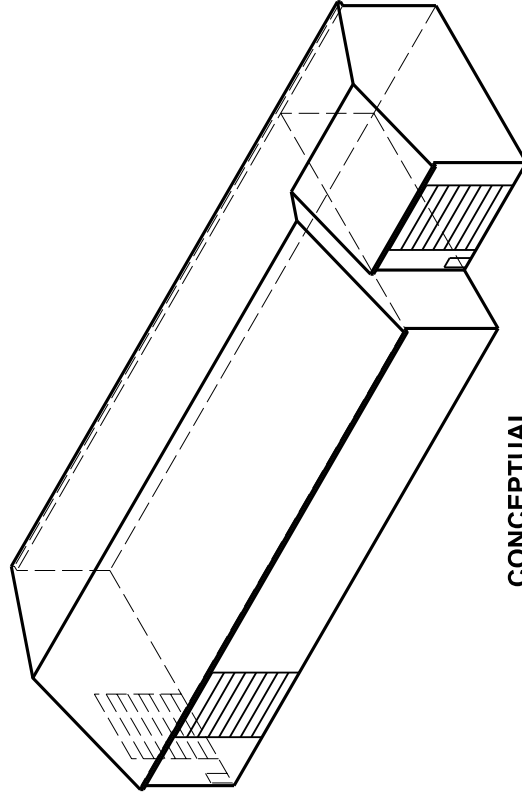


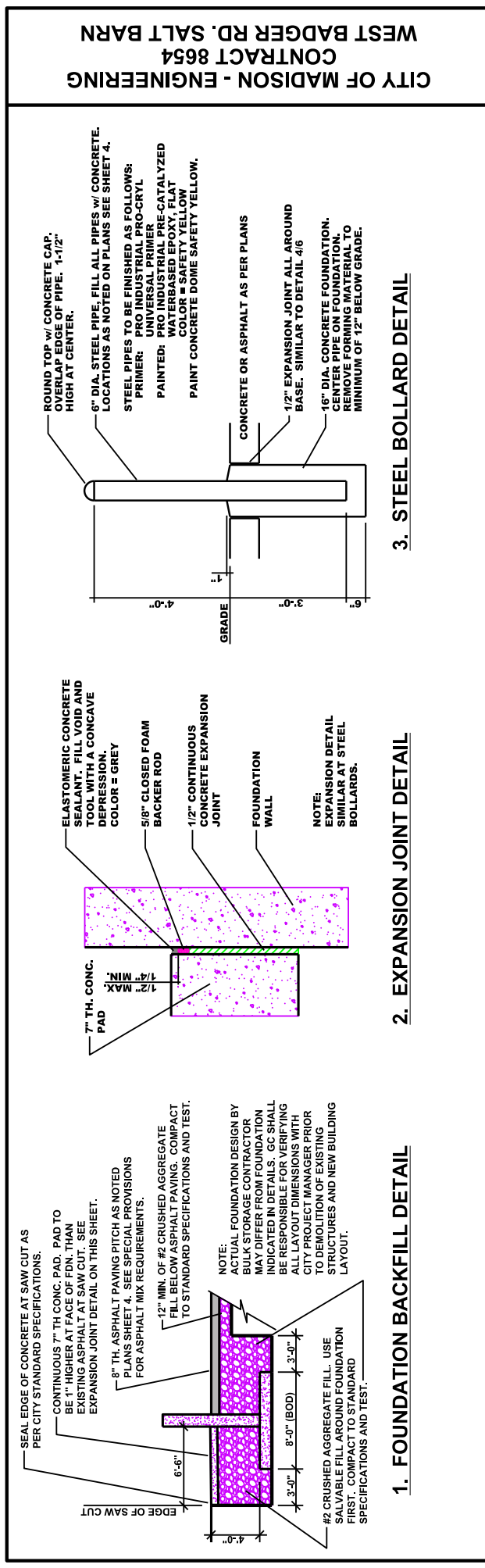
GENERAL NOTES:

1. CONCEPTUAL DRAWINGS ONLY FOR BASIS OF DESIGN (BOD). NOT FOR CONSTRUCTION. SEE SPECIFICATION 41 52 00 BULK MATERIAL STORAGE FOR MORE INFORMATION.
2. DIMENSIONS SHOWN ON CONCEPTUAL PLAN ARE INSIDE FOUNDATION DIMENSIONS USED FOR CALCULATING STORAGE QUANTITIES OF BOD. CONTRACTOR SHALL VERIFY DESIGN DIMENSIONS WITH SITE PLAN AND CITY PROJECT MANAGER PRIOR TO BUILDING LAYOUT AND STAKING.
3. ALL FOOTINGS AND FOUNDATION WALLS TO BE POURED, REINFORCED CONCRETE.
4. NO EXTERIOR KNEE BRACING IS PERMITTED.
5. ROOF TRUSSES SHALL BE CLEAR SPAN GABLE STYLE TRUSSES ONLY, WITH NO INTERIOR KNEE BRACING. GAMBREL ROOF TRUSSING IS NOT PERMITTED.
6. NO INTERIOR T-WALLS ARE PERMITTED.
7. DOOR DIMENSION LOCATIONS ARE APPROXIMATE AND MAY BE ADJUSTED AS NEEDED TO ACCOMMODATE STRUCTURAL FEATURES.

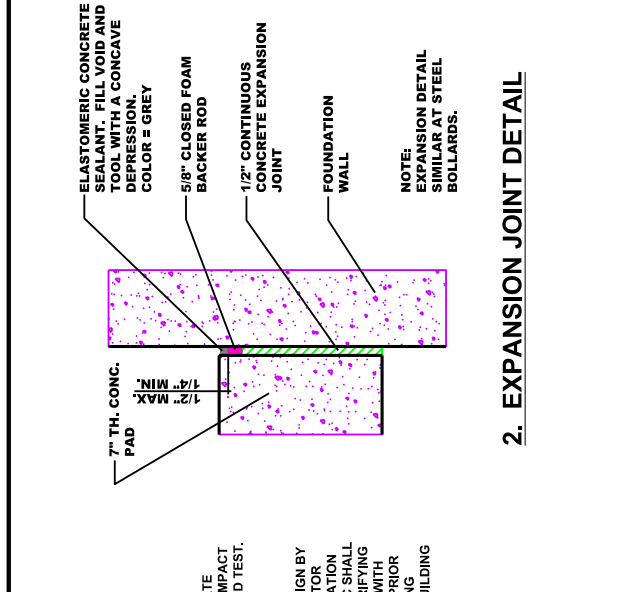


CONCEPTUAL FLOOR PLAN

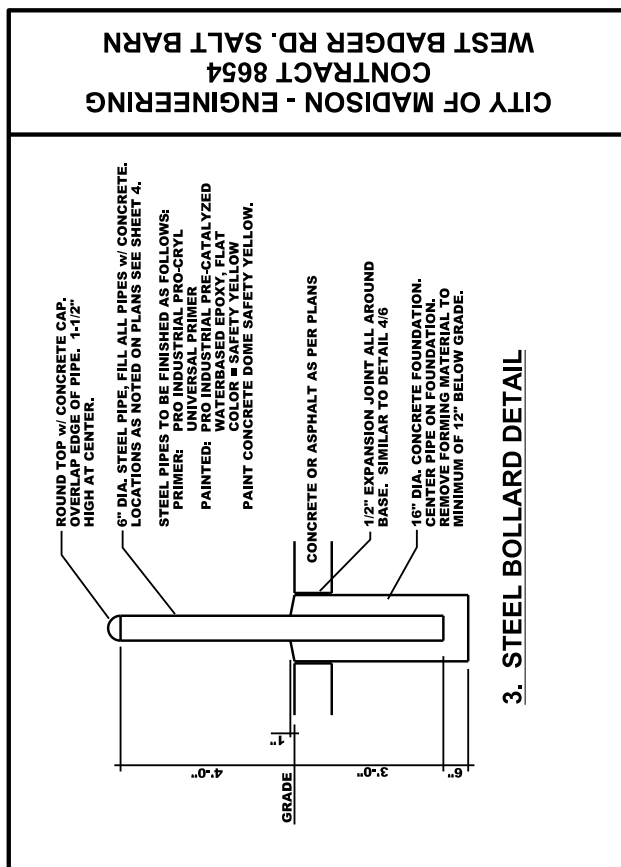




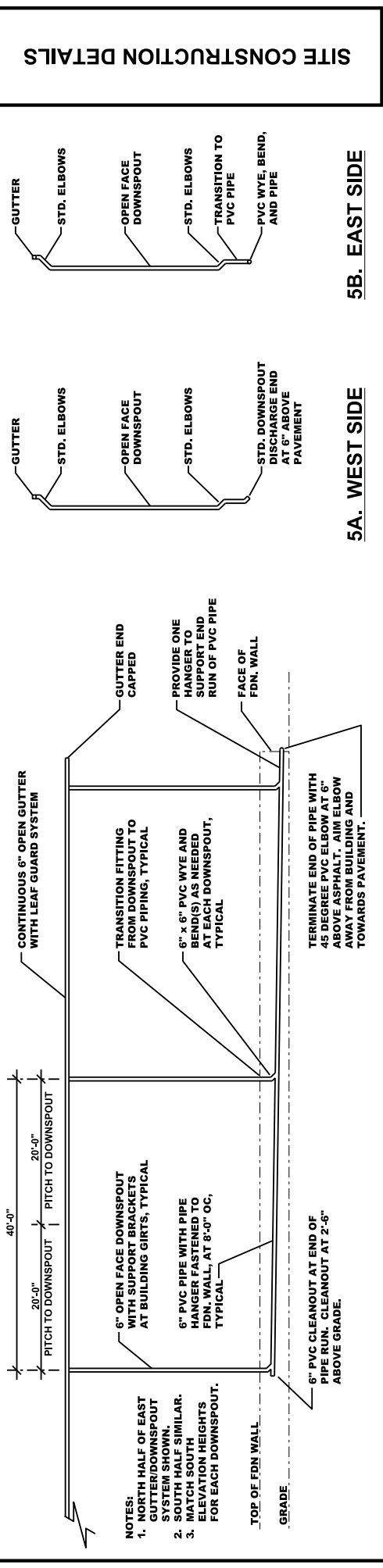
1. FOUNDATION BACKFILL DETAIL



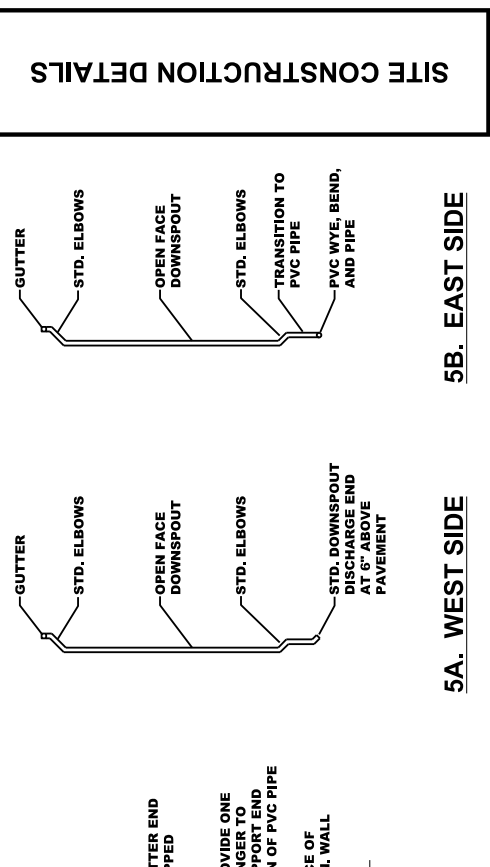
2. EXPANSION JOINT DETAIL



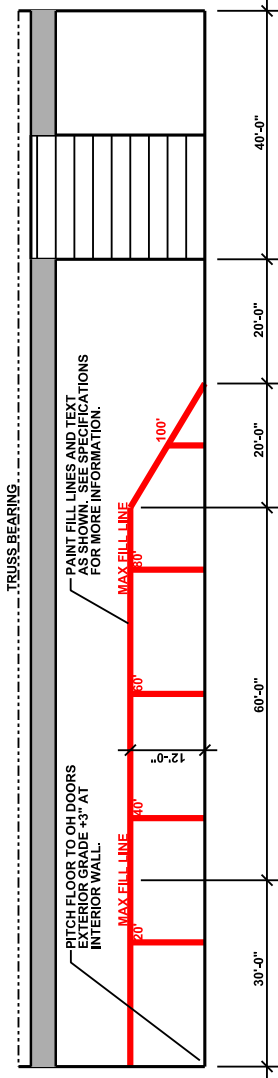
3. STEEL BOLLARD DETAIL



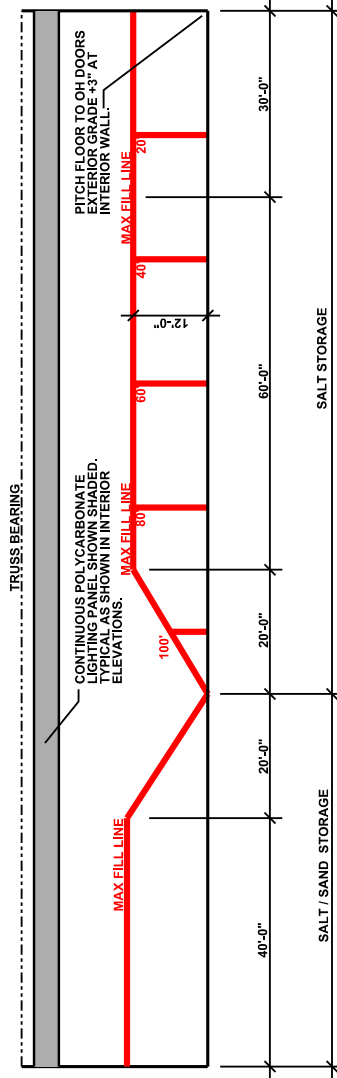
4. ENLARGED PARTIAL EAST GUTTER/DOWNSPOUT ELEVATION



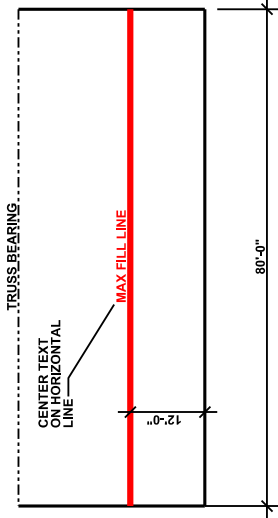
5. ENLARGED DOWNSPOUT PROFILES



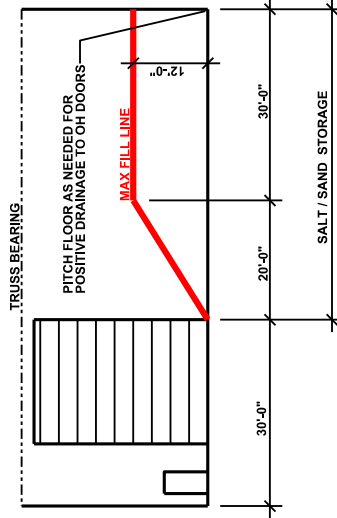
2. WEST INTERIOR ELEVATION SALT / SAND STORAGE (BASE BID)



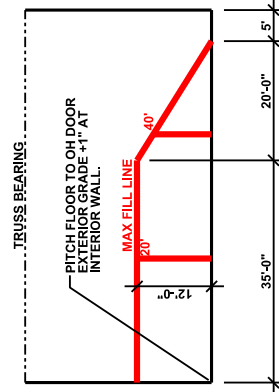
4. EAST INTERIOR ELEVATION SALT / SAND STORAGE (BASE BID)



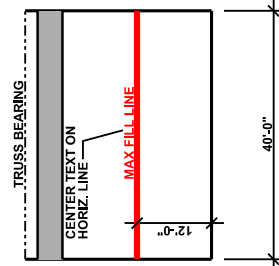
1. SOUTH INTERIOR ELEVATION SALT / SAND STORAGE (BASE BID)



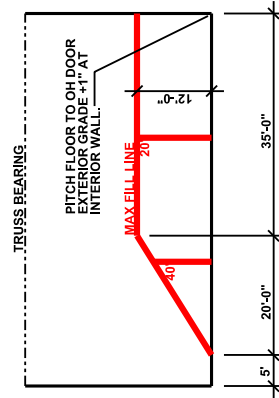
3. NORTH INTERIOR ELEVATION SALT / SAND STORAGE (BASE BID)



7. SOUTH



6. EAST



5. NORTH

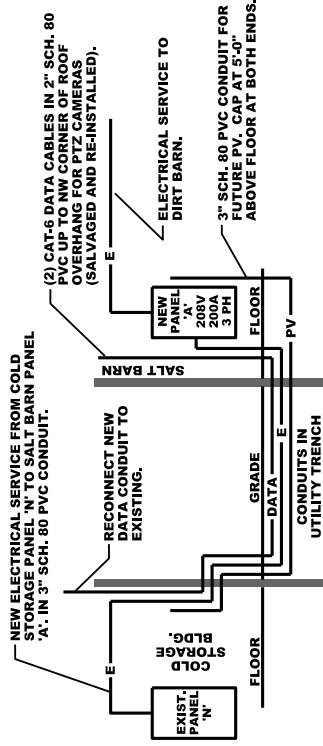
INTERIOR ELEVATIONS DIRT STORAGE (ALT. BID ITEM #1)

GENERAL NOTES:

1. CONCEPTUAL DRAWING ONLY, NOT FOR CONSTRUCTION. SEE SPECIFICATION 41 52 00 BULK MATERIAL STORAGE FOR MORE INFORMATION.
2. THIS SHEET FOR USE IN PAINTING FILL LINES AND DEPTH MARKINGS AS INDICATED IN THE SPECIFICATION AND ON THESE ELEVATIONS.

ELECTRICAL INSTALLATION NOTES:

1. THE ELECTRICAL CONTRACTOR SHALL BE RESPONSIBLE FOR REVIEWING ALL PLANS AND SPECIFICATIONS ASSOCIATED WITH THIS CONTRACT PRIOR TO BIDDING THE CONTRACT.
2. THE ELECTRICAL CONTRACTOR SHALL BE RESPONSIBLE FOR PROVIDING ALL PANELS, CONDUITS, AND WIRING AND OTHER RELATED MATERIALS REQUIRED FOR A CODE COMPLIANT INSTALLATION FOR THIS CONTRACT EXCEPT WHERE NOTED AS WORK BY OTHERS.
3. THE ELECTRICAL CONTRACTOR SHALL PROVIDE SUBMITTALS FOR EQUIPMENT AND MATERIALS TO THE OWNER FOR APPROVAL PRIOR TO ORDERING ANY MATERIALS OR EQUIPMENT.
4. THE ELECTRICAL CONTRACTOR SHALL COORDINATE WITH ALL OTHER TRADES PRIOR TO INSTALLING ANY EQUIPMENT.
5. ALL CONDUIT, FITTINGS, PULL BOXES, AND OTHER RELATED MATERIALS SHALL BE SCHEDULE 80 PVC UNLESS OTHERWISE NOTED. ALL BURIED BENDS SHALL BE LARGE RADIUS SWEEPS, NO BURIED PULL BOXES WILL BE PERMITTED.
6. ALL OUTLETS TO BE GFCI w/ WEATHERPROOF COVERS UNLESS OTHERWISE NOTED.
7. ALL CONTROL WIRING SHALL BE IN SEPARATE CONDUIT FROM LINE VOLTAGE.
8. ALL OUTLETS, LIGHTS AND MOTORS IN BASE BID (SALT BARN) AND ALT. BID ITEM #1 (DIRT BARN) SHALL BE POWERED FROM EXTERIOR PANEL 'A'.



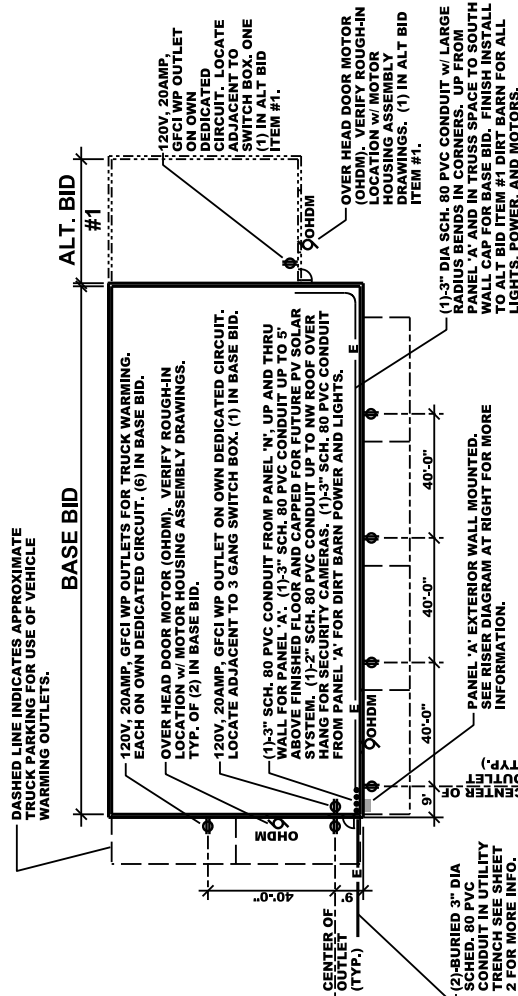
1. ELECTRICAL DISTRIBUTION SCHEMATIC

LIGHT FIXTURES:

- L-1: ALTECH ELECTRONICS HIGH BAY LED, U-UHRB0-150-50-165-DTG-1-1-H-D(4)-BL; 150W, 5000K, 120/277V, TEMPERED GLASS LENS, HOOK MOUNT, BLACK, -30°F; 10 YEAR WARRANTY
- L-2: SEE SHEET EL-100 FOR PHOTOMETRICS, LIGHT SCHEDULE, QUANTITIES AND LOCATIONS.
- L-3: EXIT EMERGENCY COMBO FOR COLD WEATHER, THE LIGHTING SOURCE, WMK125X12N-1-R-D-4X-2LA-D-CW-4; -40°F; WET LOCATION WALL MOUNTED; INTEGRAL Ni-Cd BATTERY; 120V; RED LETTERING
- L-4: EXTERIOR LED w/ EMERGENCY LIGHT FOR COLD WEATHER, THE LIGHTING SOURCE, BZ-1-LUX-ACSD-CW; -20°F WALL MOUNTED; INTEGRAL Ni-Cd BATTERY; WET LOCATION; 120/277V; 12W; 5000K; w/ DAY/NIGHT PHOTO SENSOR, -4°F

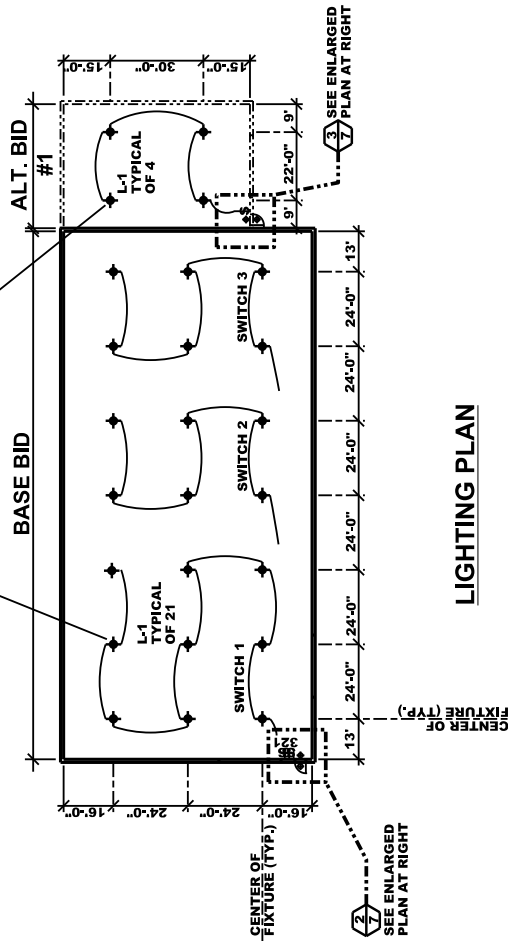


2. ENLARGED EXIT LIGHTING
 BASE BID
3. ENLARGED EXIT LIGHTING
 ALT BID ITEM #1



ELECTRICAL PLAN

HIGH BAY LED FIXTURES, CONDUITS, BOXES AND OTHER RELATED EQUIPMENT SHALL BE ABOVE TRUSS BEARING HEIGHT. MOUNTING MATERIAL AND METHOD BY ELECTRICAL CONTRACTOR.



LIGHTING PLAN

